

## AT-A-GLANCE

See below for a summary of Swift features released.

### **Inventory**

Inventory Dashboard > Inventory Reporting > Booking History Report

- After exporting to Excel, the sum totals at the bottom are removed.

### Reconsignments

- Allows user to make a copy of Reconsignment request when it is in the booked status.

### **Shipping**

#### Batches

- Shipment statuses are now syncing and universal between common Batches, Shipments and Distributions.

#### Batches

- Adds a booked volume to booked shipments in the closed status.

#### Monthly Nominations

- Changed the table header from "Edit" to "Copy."

## KEY



Customer-Requested Enhancement



Bug Fix

## AT-A-GLANCE

### **Loading**



#### Terminal Information

- Hours of Operation and Services & Special Hours are now showing.



#### Customer Authorizations

- When a user edits an authorization, the count within the Customer ID product count changes within the editing. Then, the user must refresh browser to get the updated count.



#### Self Authorizations

- Names of products are no longer truncated within Custom and Supplier-directed Blend options.



#### Carrier Authorizations

- Enhanced filter field allows users to search by SCAC code.



### **Global**

#### Products

- The filter query data returns correct and full information. The user must click the "Search" button for results.

## KEY



Customer-Requested Enhancement



Bug Fix



# INVENTORY Reporting

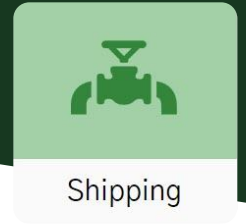
- After exporting to Excel, the sum totals at the bottom are removed.

The screenshot shows the 'Inventory Dashboard' interface. At the top, there are filters for 'Report Type' (Booking History), 'Booked Start' (01/01/2024), 'Booked End' (02/01/2024), 'Pipeline System' (ALL LOCATIONS), and 'Product Group' (ALL PRODU...). Below these are options for 'Columns', 'Filters', 'Density', and 'Export'. The main table lists inventory items with columns for Product, Product ID, Volume, Location, and Location ID. An 'Export' button is visible, with a tooltip showing options: 'Download as CSV', 'Download as Excel', and 'Print'. Below the table, an Excel export view is shown, displaying the same data in a spreadsheet format with columns A through O. The bottom of the Excel view shows a 'Sheet1' tab.

# Reconsignments

- Allows user to make a copy of Reconsignment request when it is in the booked status.

The screenshot shows the 'Reconsignments Overview' page. At the top, there are navigation tabs for 'Home', 'Inventory', 'Shipping', 'Loading', 'Dispatching', and 'Global'. Below these are buttons for '+ New Reconsignment' and '+ Bulk 1 to 1'. A 'View Filters' button is also present. The main content area shows a list of reassignment requests. Each row includes a 'Status' (e.g., 'Canceled', 'Booked'), 'Product' (e.g., 'A PREMIUM UNLEAD', 'V SUB OCTANE UNL'), 'Volume' (e.g., '12 BBL', '2000 BBL', '5000 BBL'), 'Transfer Date', and 'Booked Date'. A 'Copy' button is visible next to the 'Booked' status of the second row. At the bottom, there is a 'Rows per page' dropdown set to 25 and a page indicator '1-25 of 128'.



# SHIPPING

## Batches

- Shipment statuses are now syncing and universal between common Batches, Shipments and Distributions.
- Adds a booked volume to booked shipments that are in the closed status.

Batch ID	Status	Acceptance	Volume	Booked Volume
...	Shipped	1 of 1	50,000 bbl	50933
...	Shipped	1 of 1	25,000 bbl	24434
...	Shipped	1 of 1	25,000 bbl	25773
...	Shipped	1 of 1	25,000 bbl	24278

## Monthly Nominations

- Changed the table header from "Edit" to "Copy".

Shipper	Segment (Lag)	Product Grade	Vol. Nominated (bbl)	Nomination Month	Vol. Awarded (bbl)	Vol. Accepted (bbl)	Copy
...	Group to South System	X ULSD #2 DIESEL	150,000	July 2024	0	0	[Copy]
...	Group to South System	V SUB OCTANE UNL	150,000	July 2024	0	0	[Copy]
...	Group to Denver (MT Syst--	ALL	65,000	July 2024	60,000	60,000	[Copy]
...	To Fountain	ALL	50,000	July 2024	50,000	50,000	[Copy]
			1,355,000		981,000	581,000	

Monthly Nominations

Copy Monthly Nomination

Agent: Group to South System

Nomination Month: August 2024

A PREMIUM UNLEAD

Product Volume: bbl

V SUB OCTANE UNL

Product Volume: bbl

X ULSD #2 DIESEL

Product Volume: bbl

Submit

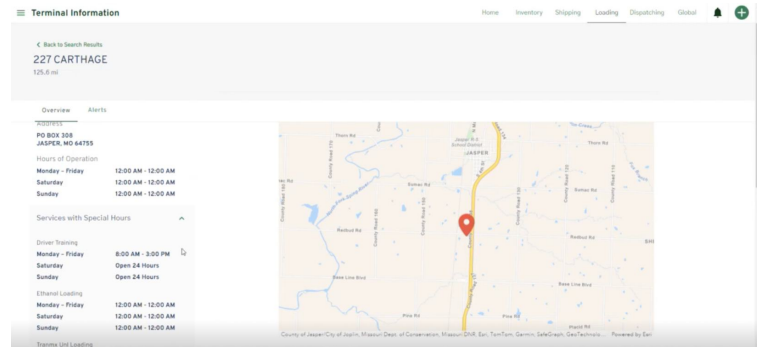
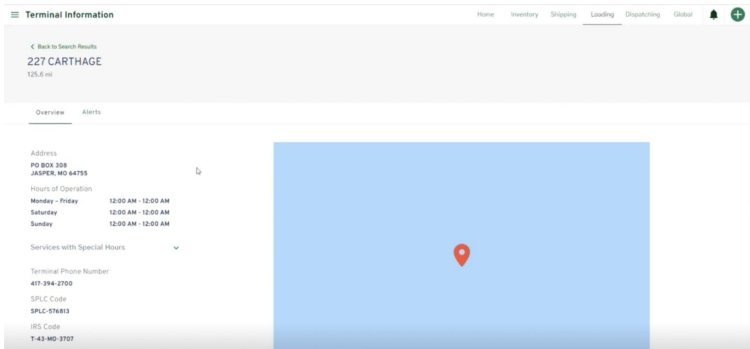


Loading

# LOADING

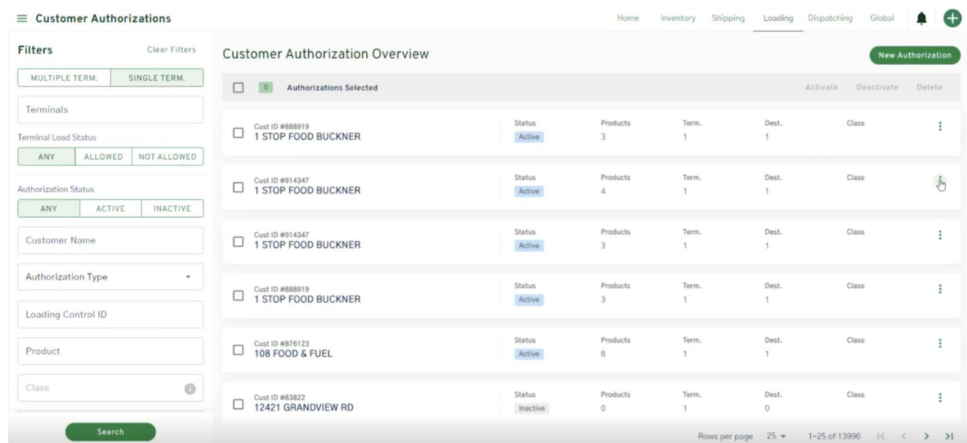
## Terminal Information

- Hours of Operation and Services & Special Hours are now showing.



## Customer Authorizations

- When a user edits an authorization, the count within the Customer ID product count changes within the editing. Then, the user must refresh browser to get the updated count.



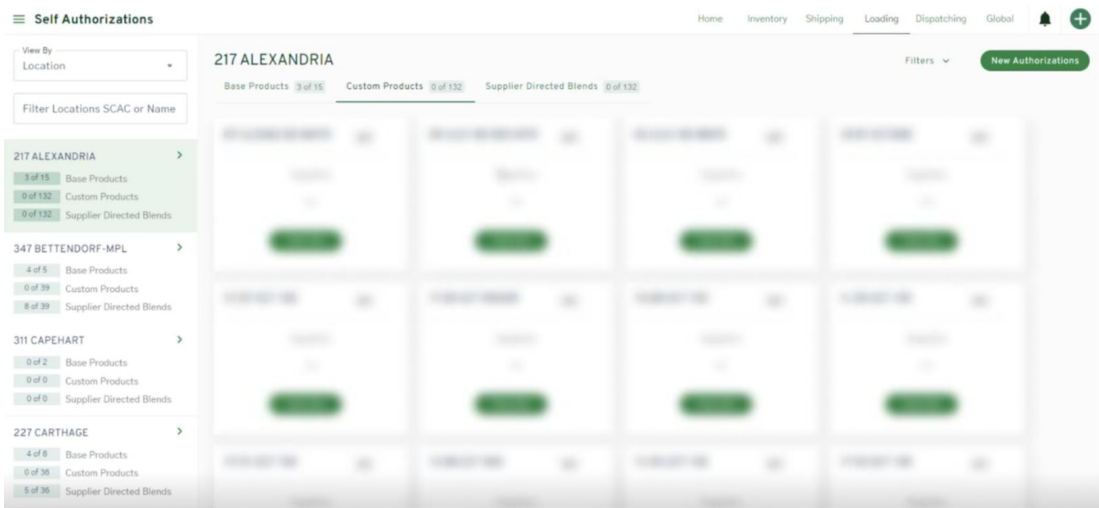


Loading

## LOADING

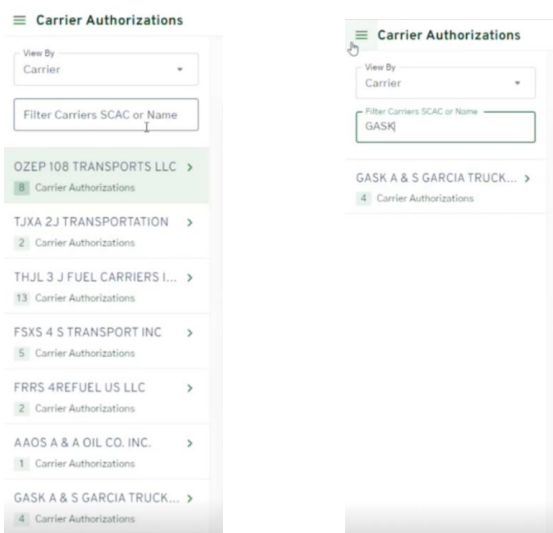
### Self Authorizations

- Names of products are no longer truncated within Custom and Supplier-directed Blend options.

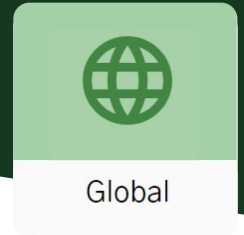


### Carrier Authorizations

- Enhanced filter field allows users to search by SCAC code.



# GLOBAL Products



- The filter query data returns correct and full information. The user must click the "Search" button for results.

Products

Home Inventory Shipping Loading Dispatching Global

Location Id:  Location Name:  Product Id:  Long Name:  Clear Search

Columns Filters Density Export

Active	Blend Code	Id	Location Id	Location Name	Product Id	Long Name	PIDX Proc
true	O	162570	200	KANSAS CITY	5Y		P48
true	H	162729	200	KANSAS CITY	4Z		VMT
true	H	162829	200	KANSAS CITY	4U		VBF
true	O	162890	200	KANSAS CITY	49		P40
true		135	201	DES MOINES	Z		
true		132	201	DES MOINES	W		WN
true		134	201	DES MOINES	Y		VA1
true		11094	201	DES MOINES	A4		NA

Rows per page: 100 401-500 of 15635

Products

Home Inventory Shipping Loading Dispatching Global

Location Id:  Location Name:  Product Id:  Long Name:  Clear Search

Columns Filters Density Export

Active	Blend Code	Id	Location Id	Location Name	Product Id	Long Name	PIDX Proc
true	O	176471	200	KANSAS CITY	MPS		CIK
true	O	176709	200	KANSAS CITY	MP11		C1M
true	N	176729	200	KANSAS CITY	V68UNL		D19
true	N	176731	200	KANSAS CITY	V68PRV		D19
true	O	176749	200	KANSAS CITY	E10V68		NA
true	O	176769	200	KANSAS CITY	EV68A1		NA
true	O	176770	200	KANSAS CITY	EA1V68		NA
true	A	176911	200	KANSAS CITY	SH3		P9N

Rows per page: 100 301-386 of 386